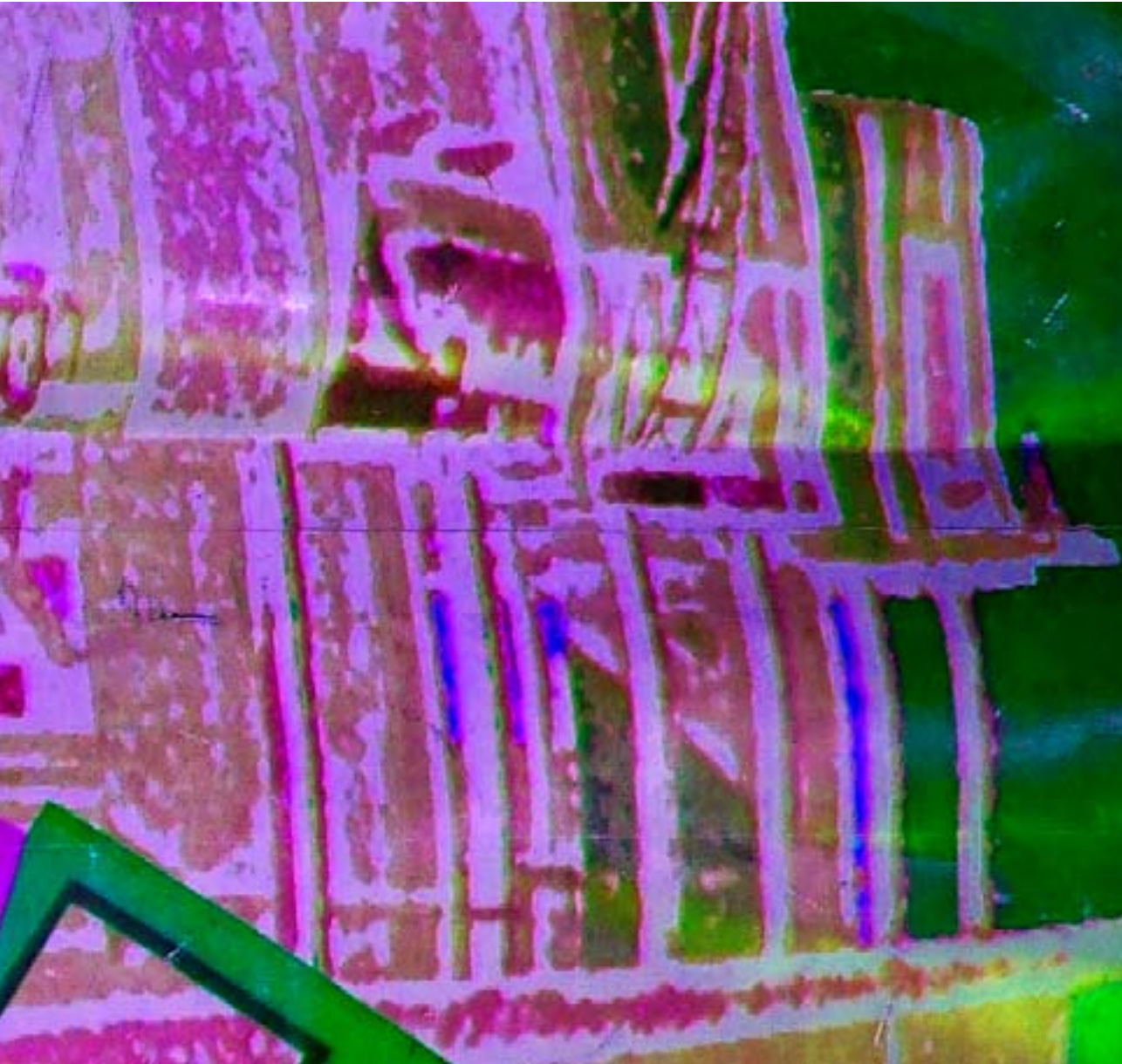


Appendix

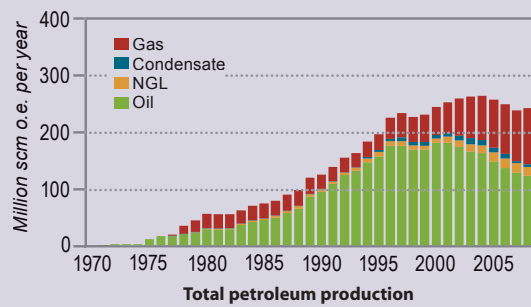


Appendix 1 Historical statistics

Table 1.1 The state's revenues from petroleum activities (MNOK)

Year	Ordinary tax	Special tax	Production fee	Area fee	Environmental taxes	Net cash flow SDFI	Dividend StatoilHydro
1971			14				
1972			42				
1973			69				
1974			121				
1975			208				
1976	1143	4	712	99			
1977	1694	725	646	57			
1978	1828	727	1213	51			
1979	3399	1492	1608	53			
1980	9912	4955	3639	63			
1981	13804	8062	5308	69			0.057
1982	15036	9014	5757	76			368
1983	14232	8870	7663	75			353
1984	18333	11078	9718	84			795
1985	21809	13013	11626	219		-8343	709
1986	17308	9996	8172	198		-11960	1245
1987	7137	3184	7517	243		-10711	871
1988	5129	1072	5481	184		-9133	0
1989	4832	1547	7288	223		755	0
1990	12366	4963	8471	258		7344	800
1991	15021	6739	8940	582	810	5879	1500
1992	7558	7265	8129	614	1916	3623	1400
1993	6411	9528	7852	553	2271	159	1250
1994	6238	8967	6595	139	2557	5	1075
1995	7854	10789	5884	552	2559	9259	1614
1996	9940	12890	6301	1159	2787	34959	1850
1997	15489	19582	6220	617	3043	40404	1600
1998	9089	11001	3755	527	3229	14572	2940
1999	5540	6151	3222	561	3261	25769	135
2000	21921	32901	3463	122	3047	98219	1702
2001	41465	64316	2481	983	2862	125439	5746
2002	32512	52410	1320	447	3012	74785	5045
2003	36819	60280	766	460	3056	67482	5133
2004	43177	70443	717	496	3309	80166	5222
2005	61589	103294	360	224	3351	98602	8139
2006	78015	133492	42	2308	3405	125523	12593
2007	70281	116233	0	764	3876	112336	16448
2008	88802	150839	0	1842	3684	153759	16940

(Source: Norwegian Public Accounts and account figures for SDFI)



(Source: Norwegian Petroleum Directorate/Ministry of Petroleum and Energy)

Table 1.2 Petroleum production on the Norwegian continental shelf, million standard cubic meter oil equivalents

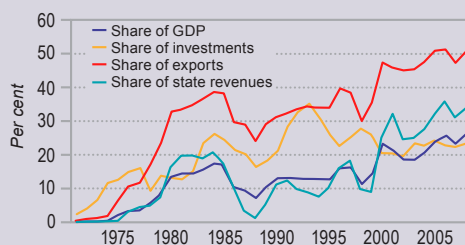
Year	Oil	Gas	Condensate	NGL	Total production
1970					
1971	0.4	0.0	0.0	0.0	0.4
1972	1.9	0.0	0.0	0.0	1.9
1973	1.9	0.0	0.0	0.0	1.9
1974	2.0	0.0	0.0	0.0	2.0
1975	11.0	0.0	0.0	0.0	11.0
1976	16.2	0.0	0.0	0.0	16.2
1977	16.6	2.7	0.0	0.0	19.3
1978	20.6	14.2	0.0	0.0	34.9
1979	22.5	20.7	0.0	1.1	44.3
1980	28.2	25.1	0.0	2.4	55.8
1981	27.5	25.0	0.0	2.2	54.7
1982	28.5	24.0	0.0	2.3	54.8
1983	35.6	23.6	0.0	2.7	62.0
1984	41.1	26.0	0.1	2.6	69.8
1985	44.8	26.2	0.1	3.0	74.0
1986	48.8	26.1	0.1	3.8	78.8
1987	57.0	28.2	0.1	4.1	89.3
1988	64.7	28.3	0.0	4.8	97.9
1989	86.0	28.7	0.1	4.9	119.7
1990	94.5	25.5	0.0	5.0	125.1
1991	108.5	25.0	0.1	4.9	138.5
1992	124.0	25.8	0.1	5.0	154.8
1993	131.8	24.8	0.6	5.5	162.7
1994	146.3	26.8	2.8	7.1	183.1
1995	156.8	27.8	3.7	7.9	196.3
1996	175.4	37.4	4.4	8.2	225.5
1997	175.9	43.0	6.4	8.1	233.3
1998	168.7	44.2	6.0	7.4	226.3
1999	168.7	48.5	6.5	7.0	230.7
2000	181.2	49.7	6.3	7.2	244.4
2001	180.9	53.9	6.6	10.9	252.3
2002	173.6	65.5	8.0	11.8	259.0
2003	165.5	73.1	11.1	12.9	262.5
2004	162.8	78.5	9.1	13.6	264.0
2005	148.1	85.0	8.4	15.7	257.2
2006	136.6	87.6	8.0	16.7	248.8
2007	128.3	89.7	3.5	16.6	238.0
2008	122.7	99.23	4.2	16.0	242.1

(Source: Norwegian Petroleum Directorate/Ministry of Petroleum and Energy)

Table 1.3 Value creation, exports, employment, investment and exploration costs

Year	Gross product (MNOK)	Export value (MNOK)	Numbers of employees	Investment incl. exploration costs (MNOK)	Exploration costs (MNOK)
1971	12	75	NA	691	
1972	207	314	200	1 192	
1973	258	504	300	2 326	
1974	1 056	1 089	900	5 138	
1975	4 218	3 943	2 200	7 291	
1976	6 896	7 438	2 700	9 270	
1977	8 617	8 852	4 000	10 589	
1978	14 835	15 117	6 100	9 228	
1979	23 494	24 788	7 900	9 061	
1980	44 285	44 638	9 700	10 119	
1981	55 189	52 432	12 200	14 462	4 133
1982	61 891	57 623	13 100	15 909	5 519
1983	73 298	68 082	13 900	27 028	5 884
1984	90 092	82 504	15 800	32 244	7 491
1985	97 347	90 098	17 700	32 839	7 830
1986	59 988	57 239	18 000	33 155	6 654
1987	59 574	58 301	17 800	35 247	4 951
1988	49 966	51 720	18 700	29 680	4 151
1989	76 768	76 681	18 600	31 957	5 008
1990	95 400	92 451	19 200	32 223	5 137
1991	101 346	101 015	19 700	43 065	8 137
1992	102 578	101 187	20 900	49 512	7 680
1993	107 542	108 463	22 300	57 579	5 433
1994	112 623	113 099	22 500	54 653	5 011
1995	120 198	121 169	21 700	48 583	4 647
1996	165 444	167 200	23 000	47 878	5 455
1997	180 594	177 825	24 000	62 494	8 300
1998	129 098	128 807	28 000	79 216	7 577
1999	176 591	173 428	27 000	69 096	4 993
2000	340 640	326 658	29 000	53 589	5 274
2001	325 333	322 291	32 000	57 144	6 815
2002	283 462	283 343	31 000	54 000	4 476
2003	295 356	291 220	29 000	64 362	4 134
2004	361 262	347 926	30 000	71 473	4 010
2005	465 341	439 881	32 000	88 478	7 537
2006	555 628	511 352	31 000	95 740	11 718
2007	543 409	508 954	35 000	109 298	17 921
2008	660 097	603 848	41 900	122 756	23 314

(Source: Statistics Norway)



Macroeconomic indicators for the petroleum sector

(Source: Statistics Norway, Ministry of Finance)

Table 1.4 The petroleum sector's percentage share of the gross national product, exports, real investments and the state's total revenues

Year	Share of gross national product	Share of exports	Share of real investment	Share of state's total revenues
1971	0.01	0.21	2.33	0.05
1972	0.18	0.79	4.03	0.12
1973	0.19	1.04	6.56	0.16
1974	0.40	1.82	11.61	0.25
1975	2.09	6.36	12.56	0.38
1976	3.28	10.54	14.86	3.07
1977	3.52	11.68	15.92	4.38
1978	5.63	17.23	9.27	4.77
1979	8.35	23.47	13.68	7.31
1980	13.58	32.80	13.03	16.27
1981	14.41	33.58	12.69	19.76
1982	14.48	34.80	15.00	19.90
1983	15.66	36.69	23.71	18.86
1984	17.31	38.55	26.18	20.74
1985	16.90	38.16	24.26	17.50
1986	10.01	29.29	21.43	10.13
1987	9.17	28.91	20.04	3.21
1988	7.33	23.99	16.27	1.02
1989	10.74	28.99	18.15	5.20
1990	12.96	31.28	23.20	11.14
1991	13.06	32.60	28.49	12.25
1992	12.87	33.51	32.65	9.49
1993	12.83	34.12	35.23	8.50
1994	12.82	33.76	30.76	7.24
1995	12.74	33.83	25.67	10.06
1996	16.02	39.69	24.58	16.14
1997	16.14	38.42	25.33	18.15
1998	11.32	30.00	28.17	9.56
1999	14.24	35.49	25.07	8.93
2000	23.00	47.39	21.88	25.07
2001	21.17	45.82	21.46	32.07
2002	18.50	44.96	21.65	24.50
2003	18.53	45.35	23.17	24.80
2004	20.73	47.49	23.58	27.25
2005	23.92	50.66	23.87	32.01
2006	25.70	50.86	23.35	35.72
2007	23.74	47.89	22.82	30.70
2008	26.01	50.48	23.28	33.55

(Source: Statistics Norway, Ministry of Finance)

Appendix 2 The petroleum resources

(per 31.12.2008)

Table 2.1 Historical production from fields in production and fields with ceased production

Field	Oil mill. scm	Gas bill. scm	NGL mill. tonnes	Condensate mill. scm	Oil equiv. ¹⁾ mill scm o.e.	Year of discovery ²⁾
Albuskjell	7.4	15.5	1.0		24.8	1972
Cod	2.9	7.3	0.5		11.2	1968
Edda	4.8	2.0	0.2		7.2	1972
Frigg		116.2		0.5	116.6	1971
Frøy	5.6	1.6		0.1	7.3	1987
Lille-Frigg	1.3	2.2		0.0	3.5	1975
Mime	0.4	0.1	0.0		0.5	1982
Nordøst Frigg		11.6		0.1	11.7	1974
Odin		27.3		0.2	27.5	1974
Tommeliten Gamma	3.9	9.7	0.6		14.6	1978
Vest Ekofisk	12.2	26.0	1.4		40.8	1970
Øst Frigg		9.2		0.1	9.3	1973
Historical production	38.3	228.6	3.7	0.9	274.9	
Alvheim	2.3	0.1			2.4	1998
Balder ^{a)}	45.7	1.0			46.7	1967
Blane	0.2		0.0		0.2	1989
Brage	50.1	2.8	1.0		54.8	1980
Draugen	121.9	1.4	2.0		127.1	1984
Ekofisk	402.8	135.8	12.3		562.0	1969
Eldfisk	89.3	37.6	3.7		133.9	1970
Embla	9.7	3.3	0.4		13.7	1988
Enoch	0.1	0.0			0.1	1991
Fram	13.1	0.4	0.0		13.5	1992
Gimle	1.7	0.1	0.0		1.8	2004
Glitne	7.9				7.9	1995
Grane	52.8				52.8	1991
Gullfaks ^{b)}	340.0	22.7	2.8		368.1	1978
Gullfaks Sør ^{c)}	33.6	24.0	2.9		63.1	1978
Gungne ³⁾		12.2	1.6	4.5	19.8	1982
Gyda ^{d)}	34.7	5.9	1.9		44.1	1980
Heidrun ^{e)}	127.3	11.5	0.5		139.8	1985
Heimdal	6.5	44.2			50.7	1972
Hod	9.0	1.6	0.2		11.1	1974
Huldra	4.6	13.8	0.1		18.6	1982
Jotun	21.8	0.9			22.6	1994
Kristin	9.7	10.4	2.2	2.1	26.5	1997
Kvitebjørn	7.3	14.6	1.3		24.3	1994
Mikkjel	1.5	8.8	2.4	2.2	17.0	1987
Murchison	13.6	0.3	0.3	0.0	14.6	1975

Field	Oil mill. scm	Gas bill. scm	NGL mill. tonnes	Condensate mill. scm	Oil equiv. ¹⁾ mill scm o.e.	Year of discovery ²⁾
Njord	23.0	2.1			25.0	1986
Norne	80.5	5.8	0.7		87.6	1992
Ormen Lange		13.1		1.1	14.2	1997
Oseberg ³⁾	345.2	21.4	5.7		377.5	1979
Oseberg Sør	34.6	5.4			40.0	1984
Oseberg Øst	17.1	0.3			17.3	1981
Ringhorne Øst	4.5	0.1			4.6	2003
Sigyn		4.5	1.8	5.0	12.9	1982
Skirne	1.2	5.3			6.5	1990
Sleipner Vest and Øst ^{3) g)}		148.3	18.7	58.0	241.8	1974
Snorre	163.5	5.9	4.5		177.9	1979
Snøhvit		2.5	0.1	0.6	3.4	1984
Statfjord	558.6	58.7	15.4	0.3	646.9	1974
Statfjord Nord	35.4	2.2	0.8		39.1	1977
Statfjord Øst	33.9	3.6	1.3		39.9	1976
Sygna	9.6				9.6	1996
Tambar and Tambar Øst ⁴⁾	8.0		0.2		8.4	1983
Tor	22.9	10.8	1.2		35.9	1970
Tordis ^{b)}	52.6	3.8	1.4		59.1	1987
Troll ^{h)}	198.7	335.7	3.5	4.3	545.4	1979
Tune	2.9	15.1	0.1		18.2	1996
Ula	69.1	3.9	2.6		77.9	1976
Urd	3.6	0.1	0.0		3.8	2000
Vale	1.0	0.8			1.8	1991
Valhall	98.9	19.5	3.1		124.4	1975
Varg	11.2				11.2	1984
Veslefrikk	49.4	2.2	1.2		53.9	1981
Vigdis	43.1	1.1	0.7		45.5	1986
Vilje	0.5	0.0			0.5	2003
Visund	18.1	3.7	0.2		22.2	1986
Volve	1.8	0.1	0.0	0.0	2.0	1993
Yme	7.9				7.9	1987
Åsgard	63.1	75.1	13.1	17.1	180.2	1981
Producing fields	3 367.1	1 104.5	112.0	95.4	4 779.7	
Total sold and delivered	3 405.4	1 333.1	115.7	96.3	5 054.6	

1) The conversion factor for NGL tonnes to scm is 1.9.

2) The year the first discovery well was drilled

3) Gas production from Gungne, Sleipner Vest and Sleipner Øst are metered collectively.

4) Production from Tambar and Tambar Øst are metered collectively

a) Balder also includes Ringhorne

b) Gullfaks also includes Gullfaks Vest

c) Gullfaks Sør also include Gulltopp, Gullveig, Rinfaks and Skinnfaks

d) Gyda also includes Gyda Sør

e) Heidrun also includes Tjeldbergodden

f) Oseberg also includes Oseberg Vest

g) Sleipner Øst also includes Loke

h) Tordis also include Tordis Øst and Borg

i) Troll also includes TOGI

(Source: Norwegian Petroleum Directorate)

Table 2.2 Reserves in fields in production and fields with approved plans for development and operation

Field	Reserves mill. scm o.e.	Year of discovery ⁵⁾	Operator at 31.12.2008	Production licence/ unit area
Alve ¹⁾	8.8	1990	StatoilHydro ASA	159 B
Alvheim	35.6	1998	Marathon Petroleum Norge AS	036 C, 088 BS, 203
Balder	61.9	1967	ExxonMobil Exploration & Production Norway AS	001
Blane	0.9	1989	Talisman Energy Norge AS	Blane
Brage	61.5	1980	StatoilHydro Petroleum AS	Brage
Draugen	149.2	1984	A/S Norske Shell	093
Ekofisk	712.2	1969	ConocoPhillips Skandinavia AS	018
Eldfisk	186.3	1970	ConocoPhillips Skandinavia AS	018
Embla	18.7	1988	ConocoPhillips Skandinavia AS	018
Enoch	0.4	1991	Talisman North Sea Limited	Enoch
Fram	32.5	1992	StatoilHydro Petroleum AS	090
Gimle	5.5	2004	StatoilHydro ASA	Gimle
Gjøa ¹⁾	54.5	1989	StatoilHydro ASA	153
Glitne	8.3	1995	StatoilHydro ASA	048 B
Grane	116.2	1991	StatoilHydro Petroleum AS	Grane
Gullfaks	390.1	1978	StatoilHydro ASA	050
Gullfaks Sør	105.2	1978	StatoilHydro ASA	050
Gungne	22.3	1982	StatoilHydro ASA	046
Gyda	48.6	1980	Talisman Energy Norge AS	019 B
Heidrun	230.9	1985	StatoilHydro ASA	Heidrun
Heimdal	51.7	1972	StatoilHydro Petroleum AS	036 BS
Hod	12.8	1974	BP Norge AS	033
Huldra	21.0	1982	StatoilHydro ASA	Huldra
Jotun	24.4	1994	ExxonMobil Exploration & Production Norway AS	Jotun
Kristin	62.8	1997	StatoilHydro ASA	Haltenbanken Vest
Kvitebjørn	107.2	1994	StatoilHydro ASA	193
Mikkjel	40.1	1987	StatoilHydro ASA	Mikkjel
Morvin ¹⁾	13.8	2001	StatoilHydro ASA	134 B
Murchison	15.0	1975	CNR International (UK) Limited	Murchison
Njord	39.9	1986	StatoilHydro Petroleum AS	Njord
Norne	109.1	1992	StatoilHydro ASA	Norne
Ormen Lange	423.2	1997	A/S Norske Shell	Ormen Lange
Oseberg ²⁾	491.0	1979	StatoilHydro Petroleum AS	Oseberg
Oseberg Sør	62.1	1984	StatoilHydro Petroleum AS	Oseberg Sør
Oseberg Øst	27.9	1981	StatoilHydro Petroleum AS	053
Rev ¹⁾	6.2	2001	Talisman Energy Norge AS	038 C
Ringhorne Øst	9.0	2003	ExxonMobil Exploration & Production Norway AS	Ringhorne Øst

Field	Reserves mill. scm o.e.	Year of discovery ⁵⁾	Operator at 31.12.2008	Production licence/ unit area
Sigyn	16.0	1982	ExxonMobil Exploration & Production Norway AS	072
Skarv ¹⁾	68.3	1998	BP Norge AS	Skarv
Skirne	10.3	1990	Total E&P Norge AS	102
Sleipner Vest	162.5	1974	StatoilHydro ASA	Sleipner Vest
Sleipner Øst	119.9	1981	StatoilHydro ASA	Sleipner Øst
Snorre	249.5	1979	StatoilHydro ASA	Snorre
Snøhvit	190.7	1984	StatoilHydro ASA	Snøhvit
Statfjord	687.5	1974	StatoilHydro ASA	Statfjord
Statfjord Nord	45.3	1977	StatoilHydro ASA	037
Statfjord Øst	44.0	1976	StatoilHydro ASA	Statfjord Øst
Sygna	10.8	1996	StatoilHydro ASA	Sygna
Tambar	12.8	1983	BP Norge AS	065
Tambar Øst	1.3	2007	BP Norge AS	Tambar Øst
Tor	37.7	1970	ConocoPhillips Skandinavia AS	Tor
Tordis	68.3	1987	StatoilHydro ASA	089
Troll ³⁾	1 625.6	1979	StatoilHydro Petroleum AS	Troll
Troll ⁴⁾		1983	StatoilHydro ASA	Troll
Tune	21.6	1996	StatoilHydro Petroleum AS	190
Tyrihans ¹⁾	77.6	1983	StatoilHydro ASA	Tyrihans
Ula	97.5	1976	BP Norge AS	019
Urd	9.9	2000	StatoilHydro ASA	128
Vale	4.2	1991	StatoilHydro Petroleum AS	036
Valhall	181.5	1975	BP Norge AS	Valhall
Varg	15.1	1984	Talisman Energy Norge AS	038
Vega ¹⁾	12.1	1981	StatoilHydro Petroleum AS	248
Vega Sør ¹⁾	10.6	1987	StatoilHydro Petroleum AS	090 C
Veslefrikk	62.0	1981	StatoilHydro ASA	052
Vigdis	63.7	1986	StatoilHydro ASA	089
Vilje	8.7	2003	StatoilHydro Petroleum AS	36
Visund	87.6	1986	StatoilHydro ASA	Visund
Volund ¹⁾	7.8	1994	Marathon Petroleum Norge AS	150
Volve	15.2	1993	StatoilHydro ASA	046 BS
Yme ¹⁾	18.8	1987	Talisman Energy Norge AS	316
Yttergryta ¹⁾	2.2	2007	StatoilHydro ASA	62
Åsgard	368.1	1981	StatoilHydro ASA	Åsgard

1) Fields with approved development plans where production had not started at 31.12.2008

2) Resources in Oseberg also include Oseberg Vest

3) The resources include the total resources for Troll

4) The resources are included in the row above

5) The year the discovery well was drilled

(Source: Norwegian Petroleum Directorate)

Table 2.3 Original recoverable reserves and remaining reserves in fields

	Original reserves ¹⁾					Remaining reserves ⁴⁾				
	Oil mill. scm	Gas bill. scm	NGL mill. tonnes	Condensate mill. scm	Oil equiv. ²⁾ mill scm o.e.	Oil mill. scm	Gas bill. scm	NGL mill. tonnes	Condensate mill. scm	Oil equiv. ²⁾ mill. scm o.e.
Alve ³⁾	1.3	5.5	1.1	0.0	8.8	1.3	5.5	1.1	0.0	8.8
Alvheim	27.5	8.1	0.0	0.0	35.6	25.2	7.9	0.0	0.0	33.1
Balder ⁴⁾	60.0	1.9	0.0	0.0	61.9	14.2	0.9	0.0	0.0	15.1
Blane	0.9	0.0	0.0	0.0	0.9	0.7	0.0	0.0	0.0	0.7
Brage	55.1	3.9	1.3	0.0	61.5	5.0	1.2	0.2	0.0	6.6
Draugen	143.1	1.5	2.4	0.0	149.2	21.2	0.1	0.4	0.0	22.1
Ekofisk	528.5	156.1	14.5	0.0	712.2	125.7	20.4	2.2	0.0	150.2
Eldfisk	135.1	43.5	4.0	0.0	186.3	45.9	5.9	0.4	0.0	52.4
Embla	12.0	5.6	0.6	0.0	18.7	2.4	2.2	0.2	0.0	5.0
Enoch	0.4	0.0	0.0	0.0	0.4	0.3	0.0	0.0	0.0	0.3
Fram	23.9	8.4	0.1	0.0	32.5	10.8	8.0	0.1	0.0	19.0
Gimle	4.0	1.1	0.2	0.0	5.5	2.3	1.0	0.2	0.0	3.7
Gjøa ³⁾	11.1	32.6	5.6	0.0	54.5	11.1	32.6	5.6	0.0	54.5
Glitne	8.3	0.0	0.0	0.0	8.3	0.3	0.0	0.0	0.0	0.3
Grane	116.2	0.0	0.0	0.0	116.2	63.4	0.0	0.0	0.0	63.4
Gullfaks ^{b)}	360.1	24.2	3.0	0.0	390.1	20.1	1.5	0.2	0.0	22.0
Gullfaks Sør ³⁾	47.9	45.7	6.1	0.0	105.2	14.3	21.7	3.2	0.0	42.1
Gungne	0.0	14.6	1.9	4.0	22.3	0.0	2.3	0.3	0.0	2.9
Gyda ^{d)}	38.8	6.2	1.9	0.0	48.6	4.1	0.3	0.0	0.0	4.5
Heidrun ³⁾	186.0	41.6	1.7	0.0	230.9	58.7	30.1	1.2	0.0	91.1
Heimdal	7.1	44.6	0.0	0.0	51.7	0.7	0.3	0.0	0.0	1.0
Hod	10.2	1.8	0.4	0.0	12.8	1.2	0.2	0.1	0.0	1.7
Huldra	4.9	15.9	0.1	0.0	21.0	0.3	2.1	0.0	0.0	2.4
Jotun	23.6	0.8	0.0	0.0	24.4	1.8	0.0	0.0	0.0	1.8
Kristin	23.9	26.0	5.7	2.1	62.8	14.1	15.5	3.5	0.0	36.3
Kvitebjørn	27.4	74.0	3.0	0.0	107.2	20.1	59.4	1.7	0.0	82.8
Mikkjel	4.6	21.9	6.0	2.3	40.1	3.1	13.0	3.6	0.0	23.1
Morvin ³⁾	9.3	3.2	0.7	0.0	13.8	9.3	3.2	0.7	0.0	13.8
Murchison	14.6	0.4	0.0	0.0	15.0	0.9	0.1	0.0	0.0	1.0
Njord	25.2	10.7	2.1	0.0	39.9	2.3	8.6	2.1	0.0	14.9
Norne	94.9	11.0	1.7	0.0	109.1	14.4	5.2	1.0	0.0	21.5
Ormen Lange	0.0	394.7	0.0	28.5	423.2	0.0	381.6	0.0	27.4	409.0
Oseberg ^{d)}	366.4	107.0	9.3	0.0	491.0	21.1	85.6	3.5	0.0	113.5
Oseberg Sør	50.6	10.8	0.4	0.0	62.1	16.0	5.4	0.4	0.0	22.1
Oseberg Øst	27.4	0.4	0.1	0.0	27.9	10.3	0.1	0.1	0.0	10.6
Rev ³⁾	0.0	4.7	0.4	0.8	6.2	0.0	4.7	0.4	0.8	6.2
Ringhorne Øst	8.8	0.2	0.0	0.0	9.0	4.3	0.1	0.0	0.0	4.4
Sigyn	0.0	6.6	2.9	3.9	16.0	0.0	2.1	1.1	-1.1	3.1
Skarv ³⁾	16.5	41.5	5.4	0.0	68.3	16.5	41.5	5.4	0.0	68.3

	Original reserves ¹⁾					Remaining reserves ⁴⁾				
	Oil mill. scm	Gas bill. scm	NGL mill. tonnes	Condensate mill. scm	Oil equiv. ²⁾ mill scm o.e.	Oil mill. scm	Gas bill.scn	NGL mill. tonnes	Condensate mill.scn	Oil equiv. ²⁾ mill.scn o.e.
Skirne	2.1	8.2	0.0	0.0	10.3	0.9	3.0	0.0	0.0	3.8
Sleipner Vest	0.0	117.7	8.3	29.1	162.5					
Sleipner Øst ⁶⁾	0.0	67.4	13.4	26.9	119.9					
Sleipner Vest and Sleipner Øst ⁵⁾						0.0	36.8	3.0	-2.0	40.5
Snorre	234.3	6.5	4.6	0.0	249.5	70.8	0.6	0.1	0.0	71.6
Snøhvit	0.0	160.6	6.3	18.1	190.7	0.0	158.1	6.2	17.5	187.3
Statfjord	565.2	76.7	24.0	0.0	687.5	6.6	18.1	8.5	0.0	40.9
Statfjord Nord	40.9	2.6	0.9	0.0	45.3	5.5	0.4	0.2	0.0	6.2
Statfjord Øst	37.0	4.0	1.5	0.0	44.0	3.2	0.4	0.3	0.0	4.1
Sygna	10.8	0.0	0.0	0.0	10.8	1.2	0.0	0.0	0.0	1.2
Tambar	9.7	2.6	0.3	0.0	12.8					
Tambar Øst	1.1	0.1	0.0	0.0	1.3					
Tambar and Tambar Øst ⁶⁾						2.8	2.7	0.1	0.0	5.7
Tor	24.5	11.0	1.2	0.0	37.7	1.6	0.2	0.0	0.0	1.8
Tordis ⁴⁾	59.7	5.3	1.7	0.0	68.3	7.1	1.5	0.3	0.0	9.2
Troll ⁴⁾	244.5	1 330.7	25.7	1.6	1 625.6	45.8	995.0	22.1	-2.7	1 080.2
Tune	3.2	18.0	0.2	0.0	21.6	0.3	2.9	0.1	0.0	3.4
Tyrhans ³⁾	29.6	35.5	6.5	0.0	77.6	29.6	35.5	6.5	0.0	77.6
Ula	87.3	3.9	3.3	0.0	97.5	18.2	0.0	0.8	0.0	19.6
Urd	9.5	0.3	0.0	0.0	9.9	5.9	0.2	0.0	0.0	6.1
Vale	2.0	2.2	0.0	0.0	4.2	1.0	1.4	0.0	0.0	2.4
Valhall	145.0	26.4	5.3	0.0	181.5	46.1	6.9	2.2	0.0	57.1
Varg	15.1	0.0	0.0	0.0	15.1	3.9	0.0	0.0	0.0	3.9
Vega ³⁾	0.0	9.4	0.5	1.7	12.1	0.0	9.4	0.5	1.7	12.1
Vega Sør ³⁾	0.0	7.4	0.4	2.4	10.6	0.0	7.4	0.4	2.4	10.6
Veslefrikk	55.7	3.8	1.3	0.0	62.0	6.3	1.6	0.1	0.0	8.1
Vigdis	59.0	1.8	1.6	0.0	63.7	15.9	0.7	0.9	0.0	18.3
Vilje	8.3	0.4	0.0	0.0	8.7	7.8	0.4	0.0	0.0	8.2
Visund	29.1	47.2	6.0	0.0	87.6	11.0	43.5	5.7	0.0	65.4
Volund ³⁾	7.2	0.6	0.0	0.0	7.8	7.2	0.6	0.0	0.0	7.8
Volve	13.6	1.1	0.2	0.1	15.2	11.8	1.0	0.2	0.1	13.2
Yme ³⁾	18.8	0.0	0.0	0.0	18.8	10.9	0.0	0.0	0.0	10.9
Yttergryta ³⁾	0.1	1.6	0.3	0.0	2.2	0.1	1.6	0.3	0.0	2.2
Åsgard	97.6	185.9	36.1	16.0	368.1	34.5	110.8	23.0	-1.1	187.9
Total	4 286.5	3 315.6	232.3	137.7	8 181.0	919.4	2 211.1	120.6	43.1	3 402.8

- 1) The table shows expected value, the estimates are subject to uncertainty
- 2) The conversion factor for NGL tonnes to scm is 1.9.
- 3) Fields with approved development plans where production had not started at 31.12.2008
- 4) A negative remaining reserves figure for a field is a result of the product not being reported under original reserves. This applies to produced NGL and condensate
- 5) Gas production from Gungne, Sleipner Vest and Øst are metered collectively
- 6) Production from Tambar and Tambar Øst are metered collectively

- a) Balder also includes Ringhorne
- b) Gullfaks also includes Gullfaks Vest
- c) Gullfaks Sør includes Gulltopp, Gullveig, Rimfaks and Skinfaks
- d) Gyda also includes Gyda Sør
- e) Heidrun also includes Tjeldbergodden
- f) Oseberg also includes Oseberg Vest
- g) Sleipner Øst also include Løke
- h) Tordis also includes Tordis Øst and Borg
- i) Troll also includes TOGI

Table 2.4 Reserves in discoveries the licensees have decided to develop

Discovery	Oil mill. scm	Gas bill. scm	NGL mill. tonnes	Condensate mill. scm	Oil equiv. ¹⁾ mill. scm o.e.	Year of discovery ²⁾
3/7-4 Trym	0.0	4.2	0.0	1.1	5.4	1990
Total	0.0	4.2	0.0	1.1	5.4	

(Source: Norwegian Petroleum Directorate)

Table 2.5 Resources in discoveries in the planning phase

Discovery	Oil mill. scm	Gas bill. scm	NGL mill. tonnes	Condensate mill. scm	Oil equiv. ¹⁾ mill. scm o.e.	Year of discovery ²⁾
1/3-6	4.4	4.8	0.0	0.0	9.2	1991
1/5-2 Flyndre	0.2	0.0	0.0	0.0	0.2	1974
1/9-1 Tommeliten Alpha	8.1	12.8	0.5	0.0	21.9	1977
15/3-1 S Gudrun	9.9	13.0	1.4	0.0	25.5	1975
15/3-4	1.8	1.3	0.3	0.0	3.7	1982
15/8-1 Alpha	0.0	2.0	0.3	1.2	3.9	1982
16/1-8	19.0	2.4	0.0	0.0	21.4	2007
2/12-1 Freja	2.9	0.6	0.0	0.0	3.5	1987
24/6-1 Peik	0.0	2.5	0.0	0.7	3.1	1985
25/11-16	5.5	0.1	0.0	0.0	5.7	1992
25/5-5	1.9	0.0	0.0	0.0	1.9	1995
30/7-6 Hild	3.3	15.4	0.8	2.0	22.3	1978
31/2-N-11 H	0.4	0.0	0.0	0.0	0.4	2005
33/9-6 Delta	0.1	0.0	0.0	0.0	0.2	1976
34/10-23 Valemon	0.0	39.8	0.0	9.5	49.2	1985
35/11-13	6.4	2.1	0.0	0.0	8.6	2005
35/2-1	0.0	21.2	0.0	0.0	21.2	2005
6406/3-2 Trestakk	8.8	2.2	0.5	0.0	11.9	1986
6407/9-9 ³⁾	0.3	1.1	0.0	0.0	1.4	1999
6507/2-2	0.7	10.1	1.7	0.0	14.0	1992
7/7-2	3.3	0.0	0.0	0.0	3.3	1992
7122/7-1 Goliat ⁴⁾	30.6	7.4	0.4	0.0	38.7	2000
Total	107.6	139.0	5.9	13.3	271.2	

1) The conversion factor for NGL tonnes to scm is 1.9

2) The year the discovery well was drilled

3) 6407/9-9 has resources in categories 4 og 5

4) 7122/7-1 Goliat has resources in categories 4 and 5

(Source: Norwegian Petroleum Directorate)

Table 2.6 Resources in discoveries where development is likely but not clarified

Discovery	Oil	Gas	NGL	Condensate	Oil equiv. ¹⁾	Year of discovery ²⁾
	mill. scm	bill. scm	mill. tonnes	mill. scm	mill. scm o.e.	
15/5-1 Dagny	13.3	15.3	0.0	0.0	28.5	1978
15/5-2	0.0	4.9	0.0	0.4	5.3	1978
16/1-9	8.6	1.1	0.0	0.0	9.7	2008
16/7-2	0.0	0.6	0.1	0.4	1.2	1982
17/12-1 Bream	8.1	0.0	0.0	0.0	8.1	1972
2/5-3 Sørøst Tor	3.1	0.9	0.0	0.0	3.9	1972
25/11-25 S	6.3	0.3	0.0	0.0	6.6	2008
25/8-4	1.0	0.0	0.0	0.0	1.0	1992
34/11-2 S Nøkken	1.2	2.7	0.1	0.0	4.1	1996
35/8-3	0.0	2.7	0.0	0.6	3.2	1988
6/3-1 PI	0.9	1.8	0.0	0.0	2.7	1985
6406/1-1 Erlend N.	0.3	1.1	0.0	0.0	1.4	2001
6406/2-1 Lavrans	3.7	11.1	1.9	0.0	18.4	1995
6406/2-6 Ragnfrid	1.7	2.1	0.5	0.0	4.7	1998
6406/2-7 Erlend	2.2	3.4	0.7	0.0	6.9	1999
6406/9-1	0.0	40.8	0.0	1.4	42.2	2005
6407/6-6	0.0	1.4	0.2	0.5	2.4	2008
6506/11-2 Lange	0.4	0.2	0.0	0.0	0.6	1991
6506/12-3 Lysing	1.5	0.3	0.0	0.0	1.8	1985
6506/6-1	0.0	89.3	2.8	5.0	99.6	2000
6507/11-6 Sigrid	0.4	1.9	0.3	0.0	2.9	2001
6507/11-9	0.0	1.4	0.2	0.4	2.3	2008
6507/7-13	0.9	0.0	0.0	0.0	1.0	2001
6608/10-11 S	0.0	0.2	0.0	0.0	0.2	2006
6707/10-1	0.0	35.5	0.0	1.3	36.8	1997
7/8-3	2.6	0.1	0.0	0.0	2.7	1983
7122/6-1	1.2	8.7	0.0	0.0	9.8	1987
Total	57.2	227.8	6.9	10.0	308.1	

1) The conversion factor for NGL tonnes to scm is 1.9

2) The year the discovery well was drilled

(Source: Norwegian Petroleum Directorate)

Table 2.7 Resources in discoveries that have not been evaluated

Discovery	Oil mill. scm	Gas bill. scm	NGL mill. tonnes	Condensate mill. scm	Oil equiv. ¹⁾ mill. scm o.e.	Year of discovery ²⁾
1/3-11	1.5	0.9	0.0	0.0	2.3	2008
15/12-18 S	0.9	0.0	0.0	0.0	0.9	2007
16/1-7	0.6	0.1	0.0	0.0	0.7	2004
16/2-3	0.0	1.9	0.0	0.3	2.2	2007
25/10-8	1.4	3.2	0.0	0.0	4.7	1997
25/4-3	0.8	4.5	0.0	0.0	5.3	1974
30/9-21 S	1.5	1.0	0.0	0.1	2.6	2008
34/12-1	0.0	7.3	0.7	1.3	9.9	2008
34/3-1 S	8.4	0.0	0.0	0.0	8.4	2008
34/8-14 S	2.9	1.5	0.0	0.0	4.4	2008
35/10-2	0.0	1.6	0.0	0.0	1.6	1996
6405/10-1	0.0	1.9	0.0	0.2	2.1	2007
6407/7-8	0.0	5.3	0.0	0.5	5.7	2008
6407/8-4 S	0.0	1.4	0.0	0.0	1.4	2008
6706/12-1	0.0	3.7	0.0	0.1	3.8	2008
6707/10-2 S	0.0	11.0	0.0	0.0	11.0	2008
7120/12-2	0.0	10.3	0.0	0.0	10.3	1981
7120/12-3	0.0	5.7	0.0	0.0	5.7	1983
7125/4-1	7.3	2.0	0.0	0.1	9.4	2007
7222/11-1	0.0	5.0	0.0	0.0	5.0	2008
7222/6-1 S	17.7	3.8	0.0	0.0	21.5	2008
7224/6-1	0.0	0.0	0.0	0.0	0.0	2008
7226/11-1	2.5	48.0	0.0	0.0	50.5	1988
7226/2-1	0.0	24.9	0.0	1.4	26.3	2008
Total	45.4	145.1	0.7	3.9	195.8	

1) The conversion factor for NGL tonnes to scm is 1.9

2) The year the discovery well was drilled

(Source: Norwegian Petroleum Directorate)

Appendix 3 Operators and licensees

The table below lists the operators and licensees in production licences and fields on the Norwegian continental shelf. There are 418 active production licences and 421 operatorships. This is due to the fact that StatoilHydro ASA and StatoilHydro Petroleum AS share operatorship in production licences 085 and 085 B, while Maersk Oil Norway AS and StatoilHydro Petroleum AS share operatorship in production licence 296. In addition, Gassco AS is the operator for large parts of the gas pipeline network. Please visit our fact pages at www.npd.no for more information.

Table 3.1 Operators and licensees per February 2008

Operator/licensee	Operatorship in production license	Licensee in production license	Licensee in field
A/S Norske Shell	8	20	8
Aker Exploration AS	2	17	
BG Norge AS	15	20	
BP Norge AS	11	14	7
Centrica Resources (Norge) AS	9	21	3
ConocoPhillips Skandinavia AS	14	38	23
DONG E & P Norge AS	6	33	9
Dana Petroleum Norway AS	2	16	3
Det norske oljeselskap ASA	29	55	7
Discover Petroleum AS	1	9	
E.ON Ruhrgas Norge AS	5	29	2
Endeavour Energy Norge AS	4	21	2
Eni Norge AS	14	48	18
ExxonMobil Exploration and Production Norway AS	10	51	26
GDF SUEZ E&P Norge AS	2	33	5
Hess Norge AS	1	15	4
Idemitsu Petroleum Norge AS	1	15	7
Lotos Exploration and Production Norge AS	2	8	1
Lundin Norway AS	19	34	3
Maersk Oil Norway AS	2	11	
Maersk Oil PL 018C Norway AS	1	1	
Marathon Petroleum Norge AS	8	12	3
Nexen Exploration Norge AS	10	11	
Norwegian Energy Company ASA	5	31	
OMV (Norge) AS	5	7	
Petro-Canada Norge AS	5	17	
Premier Oil Norge AS	2	10	1
RWE Dea Norge AS	3	33	8
Rocksource ASA	3	6	
StatoilHydro ASA	103	179	57
StatoilHydro Petroleum AS	68	110	45
Talisman Energy Norge AS	19	38	10
Total E&P Norge AS	13	76	41
Wintershall Norge AS	5	14	
Wintershall Norge ASA	14	45	4

Other licensees	Production licence	Field
4Sea Energy AS	2	
Altinex Oil Norway AS	10	2
Bayerngas Norge AS	7	1
Brigde Energy AS	10	
Chevron Norge AS	5	1
Concedo ASA	6	
Edison International Spa	6	
Enterprise Oil Norge AS	6	7
Faroe Petroleum Norge AS	21	
Genesis Petroleum Norway AS	5	
Norske AEDC A/S	1	2
North Energy AS	2	
PA Resources Norway AS	10	1
PGNiG Norway AS	4	1
Petoro AS	131	47
Repsol Exploracion S.A	1	
Sagex Petroleum Norge AS	5	
Serica Energy Norge AS	2	
Skagen 44 AS	5	
Skeie Energy AS	7	1
Spring Energy Norway AS	5	
Svenska Petroleum Exploration AS	6	2
VNG Norge AS	8	

(Source: Norwegian Petroleum Directorate)

Appendix 4 List of addresses

GOVERNMENT BODIES

The Ministry of Petroleum and Energy

P.O. Box 8148 Dep, 0033 Oslo
Tel. +47 22 24 90 90. Fax +47 22 24 95 65
www.regjeringen.no/oed

The Norwegian Petroleum Directorate

P.O. Box 600, 4003 Stavanger
Tel. +47 51 87 60 00. Fax +47 51 55 15 71
www.npd.no

The Harstad office

P.O. Box 787, 9488 Harstad
Tel. +47 77 01 83 50. Fax +47 77 06 38 95

The Ministry of Labour and Social Inclusion

P.O. Box 8019 Dep, 0030 Oslo
Tel. +47 22 24 90 90. Fax +47 22 24 87 11
www.regjeringen.no/aid

The Petroleum Safety Authority Norway

P.O. Box 599, 4003 Stavanger
Tel. +47 51 87 60 50. Fax +47 51 87 60 80
www.ptil.no

The Ministry of Finance

P.O. Box 8008 Dep, 0030 Oslo
Tel. +47 22 24 90 90. Fax +47 22 24 95 10
www.regjeringen.no/fin

The Ministry of the Environment

P.O. Box 8013 Dep, 0030 Oslo
Tel. +47 22 24 90 90. Fax +47 22 24 95 60
www.regjeringen.no/md

OPERATORS

A/S Norske Shell

P.O. Box 40, 4098 Tananger
Tel. +47 51 69 30 00. Fax +47 51 69 30 30
www.shell.com

Aker Exploration AS

P.O. Box 580 Sentrum, 4003 Stavanger
Tel. +47 51 21 48 00. Fax +47 51 21 48 01
www.akerexploration.com

BG Norge AS

P.O. Box 780 Sentrum, 4004 Stavanger
Tel. +47 51 20 59 00. Fax +47 51 20 59 90
www.bg-group.com

BP Norge AS

P.O. Box 197 Forus, 4065 Stavanger
Tel. +47 52 01 30 00. Fax +47 52 01 30 01
www.bp.no

Centrica Resources (Norge) AS

P.O. Box 520, 4003 Stavanger
Tel. +47 51 50 65 20. Fax +47 51 50 65 49
www.centrica.com

ConocoPhillips Skandinavia AS

P.O. Box 3, 4064 Tananger
Tel. +47 52 02 00 00. Fax +47 52 02 66 00
www.conocophillips.no

Dana Petroleum Norway AS

P.O. Box 128, 1325 Lysaker
Tel. +47 67 52 90 20. Fax +47 62 52 90 30
www.dana-petroleum.com

Det norske oljeselskap ASA

Nedre Bakklandet 58 C, 7014 Trondheim
Tel. +47 90 70 60 00. Fax +47 73 53 05 00
www.detnor.no

Discover Petroleum AS

P.O. Box 690, 9257 Tromsø
Tel.+47 85 22 08 80. Fax +47 77 69 06 91
www.discoverpetroleum.com

DONG E & P Norge AS

P.O. Box 450 Sentrum, 4002 Stavanger
Tel. +47 51 50 62 50. Fax +47 51 50 62 51
www.dong.no

Endeavour Energy Norge AS

P.O. Box 1989 Vika, 0125 Oslo
Tel. +47 22 01 04 70. Fax +47 22 01 04 71
www.endeavourcorp.com

Eni Norge AS

P.O. Box 101 Forus, 4064 Stavanger
Tel. +47 52 87 48 00. Fax +47 52 87 49 30
www.eninorge.no

E.ON Ruhrgas Norge AS

P.O. Box 640 Sentrum, 4003 Stavanger
Tel. +47 51 51 74 00. Fax +47 51 51 74 10
www.eon-ruhrgas-norge.com

**ExxonMobil Exploration and
Production Norway AS**

P.O. Box 60 Forus, 4064 Stavanger
Tel. +47 51 60 60 60. Fax +47 51 60 66 60
www.exxonmobil.no

GDF SUEZ E & P Norge AS

P.O. Box 242 Forus, 4066 Stavanger
Tel. +47 52 04 46 00. Fax +47 52 04 46 01
www.gdfsuezep.no

Hess Norge AS

P.O. Box 130, 4065 Stavanger
Tel. +47 51 31 54 00. Fax +47 51 31 54 10
www.hess.com

Idemitsu Petroleum Norge AS

P.O. Box 215 Skøyen, 0213 Oslo
Tel. +47 23 25 05 00. Fax +47 23 25 05 01
www.idemitsu.no

Lotos Exploration and Production Norge AS

Vassbotnen 1, 4313 Sandnes
Tel. +47 94 14 89 00
www.lotosupstream.no

Lundin Norway AS

Strandveien 50 D, 1366 Lysaker
Tel. +47 67 10 72 50. Fax +47 67 10 72 51
www.lundin-petroleum.com

Maersk Oil Norway AS

P.O. Box 8014, 4068 Stavanger
Tel. +47 52 00 28 00. Fax +47 52 00 28 01
www.maerskoil.com

Maersk Oil PL 018 C Norway AS

c/o Mærsk Oil Norway AS

Marathon Petroleum Norge AS

P.O. Box 480 Sentrum, 4002 Stavanger
Tel. +47 51 50 63 00. Fax +47 51 50 63 01
www.marathon.com

Nexen Exploration Norge AS

P.O. Box 130, 4065 Stavanger
Tel. +47 51 30 21 00. Fax +47 51 30 21 99
www.nexeninc.com

Norwegian Energy Company AS (NORECO)

P.O. Box 550 Sentrum, 4003 Stavanger
Tel. +47 99 28 39 00. Fax +47 51 53 33 33
www.noreco.no

OMV (Norge) AS

P.O. Box 130, 4065 Stavanger
Tel. +47 52 97 70 00. Fax +47 52 97 70 10
www.omv.com

Petro-Canada Norge AS

P.O. Box 269 Sentrum, 4002 Stavanger
Tel. +47 51 21 50 00. Fax +47 51 21 50 99
www.petro-canada.com

Premier Oil Norge AS

P.O. Box 800 Sentrum, 4004 Stavanger
Tel. +47 51 21 31 00. Fax +47 51 21 31 01
www.premieroil.no

Rocksourc ASA

Munkedamsveien 45, oppg. A, 0250 Oslo
Tel. +47 22 94 77 70. Fax +47 22 94 77 71
www.rocksourc.com

RWE Dea Norge AS

P.O. Box 243 Skøyen, 0213 Oslo
Tel. +47 21 30 30 00. Fax +47 21 30 30 99
www.rwe-dea.no

StatoilHydro ASA

4035 Stavanger
Tel. +47 51 99 00 00, Fax +47 51 99 00 50
www.statoilhydro.com

StatoilHydro Petroleum AS

4035 Stavanger
Tel. +47 51 99 00 00. Fax +47 51 99 00 50
www.statoilhydro.com

Talisman Energy Norge AS

P.O. Box 649 Sentrum, 4003 Stavanger
Tel. +47 52 00 20 00. Fax +47 52 00 15 00
www.talisman-energy.com

Total E&P Norge AS

P.O. Box 168 Sentrum, 4001 Stavanger
Tel. +47 51 50 30 00. Fax +47 51 72 66 66
www.total.no

Wintershall Norge AS

P.O. Box 775 Sentrum, 0106 Oslo
Tel. +47 21 06 35 30. Fax +47 21 06 35 31
www.wintershall.com

Wintershall Norge ASA

P.O. Box 230 Sentrum, 4001 Stavanger
Tel. +47 51 50 63 50. Fax +47 51 50 63 51
www.revus-energy.no

OTHER LICENSEES**4Sea Energy AS**

P.O. Box 250, 4002 Stavanger
Tel.+47 51 56 53 00. Fax +47 51 21 32 09
www.4sea.no

Altinex Oil Norway AS

P.O. Box 550 Sentrum, 4003 Stavanger
Tel. +47 99 28 39 00. Fax +47 51 53 33 33
www.altinexoil.no

Bayerngas Norge AS

P.O. Box 73, 0216 Oslo
Tel. +47 22 52 99 00. Fax +47 22 52 99 01
www.bayerngasnorge.com

Bridge Energy AS

P.O. Box 279, 1379 Nesbru
Tel. +47 66 77 96 30. Fax +47 66 77 96 39
www.bridge-energy.no

Chevron Norge AS

P.O. Box 97 Skøyen, 0212 Oslo
Tel.+47 22 13 56 60. Fax +47 22 13 56 96
www.chevron.com

Concedo ASA

Torvveien 1, 1383 Asker
Tel. +47 40 00 62 55. Fax +47 66 78 99 93
www.concedo.no

Edison International Norway Branch

P.O. Box 130, 4065 Stavanger
Tel. +47 52 97 71 00. Fax +47 52 97 71 49

Enterprise Oil Norge AS

P.O. Box 40, 4098 Tananger
Tel. +47 51 69 30 00. Fax +47 51 69 30 30
www.shell.com

Faroe Petroleum Norge AS

P.O. Box 309, 4002 Stavanger
Tel. +47 51 21 51 00. Fax +47 51 21 51 01
www.faroe-petroleum.com

Genesis Petroleum Norway AS

P.O. Box 156, 1371 Asker
Tel. +47 66 75 25 40. Fax +47 66 75 25 45
www.genesis-petroleum.com

Norske AEDC A/S

P.O. Box 207 Sentrum, 4001 Stavanger
Tel. +47 51 91 70 40. Fax +47 51 91 70 41

North Energy AS

P.O. Box 1243, 9504 Alta
Tel. +47 78 60 79 50. Fax +47 78 60 83 50
www.northenergy.no

PA Resources Norway AS

Munkedamsveien 45 E, 0250 Oslo
Tel. +47 21 56 76 00. Fax +47 21 56 76 01
www.paresources.se

Petoro AS

P.O. Box 300 Sentrum, 4002 Stavanger
Tel. +47 51 50 20 00. Fax +47 51 50 20 01
www.petoro.no

PGNiG Norway AS

P.O. Box 344, 4067 Stavanger
Tel. +47 51 95 07 50. Fax +47 51 95 07 91
www.en.pgnig.pl

Repsol Exploracion S.A.

Paseo de la Castellana 278-280
28046 Madrid, Spain
Tel. +34913488000

Sagex Petroleum Norge AS

Haakon VII's gate 8, 4001 Stavanger
Tel. +47 51 53 83 40. Fax +47 51 53 83 41
www.sagex.no

Skagen 44 AS

P.O. Box 332 Sentrum, 4002 Stavanger
Tel. +47 51 52 38 00. Fax +47 51 52 38 01
www.skagen44.no

Skeie Energy AS

Luramyrveien 29, 4313 Sandnes
Tel. +47 51 87 46 17. Fax +47 51 87 46 19

Spring Energy Exploration Norge AS

Tordenskioldsgate 6B, 0160 Oslo
Tel. +47 23 13 99 50. Fax +47 23 13 99 99
www.serica-energy.com

Spring Energy Norway AS

Tordenskioldsgate 6B, 0160 Oslo
Tel. +47 23 13 99 50. Fax +47 23 13 99 99
www.springenergy.no

Svenska Petroleum Exploration AS

P.O. Box 153, 0216 Oslo
Tel. +47 21 50 84 00. Fax +47 21 50 84 19
www.spe.se

VNG Norge AS

P.O. Box 720 Sentrum, 4003 Stavanger
Tel. +47 51 53 89 00. Fax +47 51 53 89 01
www.vng.no

Other companies**Gassco AS**

P.O. Box 93, 5501 Haugesund
Tel. +47 52 81 25 00. Fax +47 52 81 29 46
www.gassco.no

Appendix 5 Conversion factors

Oil, condensate and gas volumes are stated in standard cubic metres (scm) and NGL volumes in tonnes.

A measure of total resources can be obtained by adding up the energy content in the various types of petroleum. The total is calculated in standard cubic metre oil equivalents (scm o.e.).

1 scm oil	=	1.0 scm o.e.
1 scm condensate	=	1.0 scm o.e.
1000 scm gas	=	1.0 scm o.e.
1 tonne NGL	=	1.9 scm o.e.

Gas	1 cubic foot	1 000.00 Btu
	1 cubic metre	9 000.00 kcal
	1 cubic metre	35.30 cubic feet

Crude oil	1 scm	6.29 barrels
	1 scm	0.84 toe
	1 tonne	7.49 barrels
	1 barrel	159.00 litres
	1 barrel per day	48.80 tonnes per year
	1 barrel per day	58.00 scm per year

Approximate energy content

	MJ
1 scm natural gas	40
1 scm crude oil	35 500
1 tonne coal equivalent	29 300

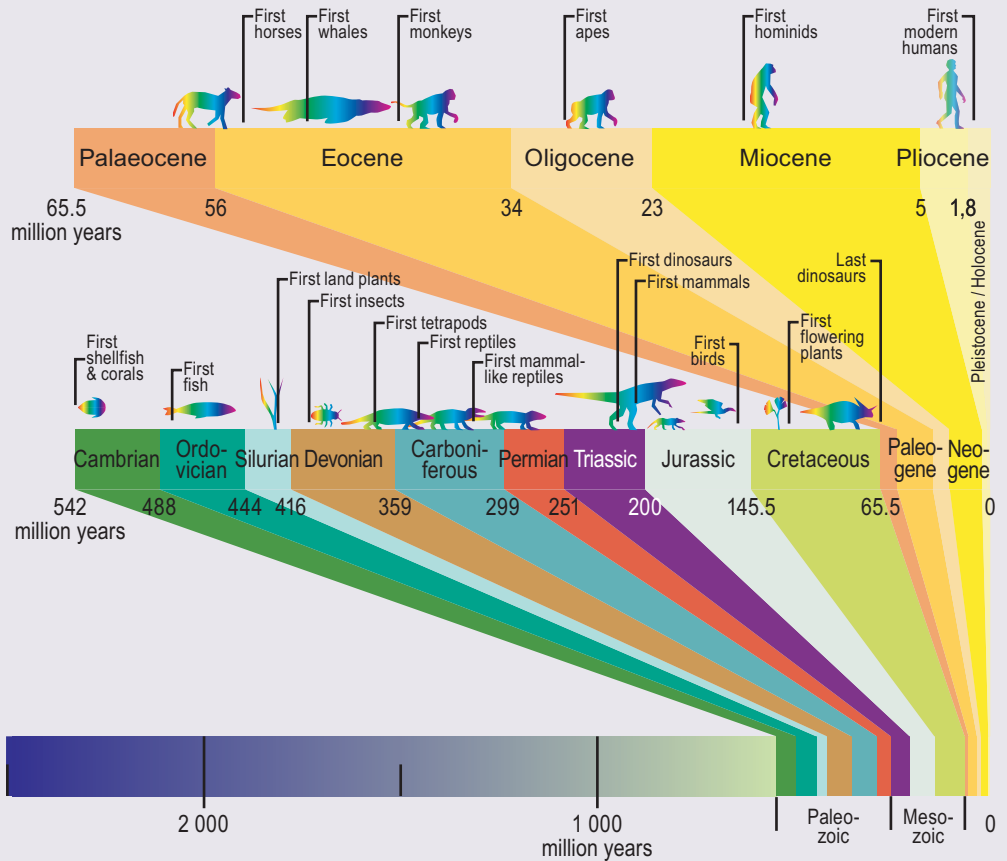
Conversion factors for volume

1 scm crude oil	=	6.29 barrels
1 scm crude oil	=	0.84 tonnes crude oil (average for oil from the Norwegian continental shelf)
1 scm gas	=	35.314 cubic feet

Conversion factors between various units of energy

		MJ	kWh	BTU
1 MJ	Megajoule	1	0.2778	947.80
1 kWh	kilowatt hour	3.6	1	3412.10
1 BTU	British thermal unit	0.001055	0.000293	1

Appendix 6 The Geological Timescale



Appendix 7 Reservoir and Lithostratigraphy

System	Series	North Sea			Norwegian Sea	Barents Sea
		56°	58°	60°	62°	
PALEOGENE	Olig					
	Eoc		Hordland			
	Pale	Balder Forties Ekofisk	Rogaland	× Frigg Balder Hermod Heimdal Ty	"Egga"	
CRETAC.	U	Shetland Tor Hod				
	L				Lange	
JURASSIC	U	Ula	Viking ○ Draupne △ Heather	Viking Sognefjord Fensfjord	Viking Rogn	
	M	Sandnes	Hugin	Krossfjord	Fangst	Stø
	L		Vestland Sleipner	Brent Tarbert Ness Etive Rannoch Oseberg	Garn Not Ile	Realgrunnen
TRIASSIC	U	Skagerrak	Skagerrak	Lunde		Snadd
	M					Kobbe
	L					
PERM.	"Perm"					
CARB.						
DEVON	"Devon"					

- × Balder - intra Balder sandstone
- Draupne - intra Draupne sandstone
- △ Heather - intra Heather sandstone
- "Egga" - informal unit