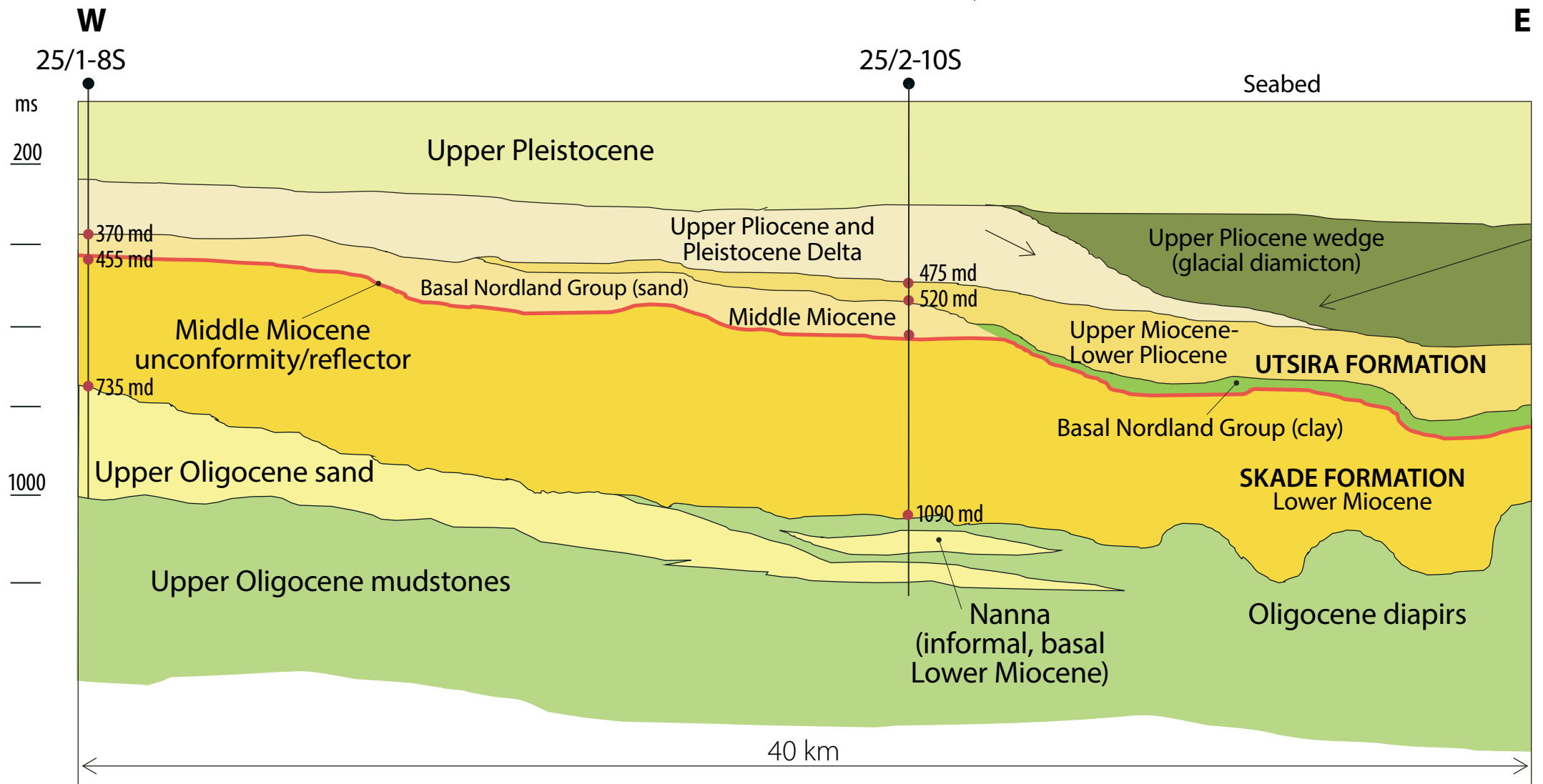


Hutton sand (informal) according to Gregersen & Johannessen (2007)



OD 1206045

Profile 6: This geo-section illustrates how four different delta sands, which constitute the outer delta front of the Hutton sand system (informal name used only in UK waters) are deposited. In Norwegian waters the Lower Miocene Skade Formation is turbiditic in origin and overlies Oligocene mudstones. The Utsira Formation overlies a mud-prone, distal Middle Miocene unit and thins out west from the delta front towards the 25/1-8S area. An Upper Pliocene delta is built up on top of the Utsira Formation in the 25/2-10S area, modified after Gjeldvik et al. (2011).

Reference: Gjeldvik, I. T., Eidvin, T. & Riis, F., 2011: Neogene Delta Systems In The North-Western North Sea. Poster shown at Sustainable Earth Sciences Conference & Exhibition, Valencia, Spain, 8-10 November 2011, Available from the internet: <http://www.npd.no/Global/Norsk/3-Publikasjoner/Presentasjoner/Plakat.pdf>