

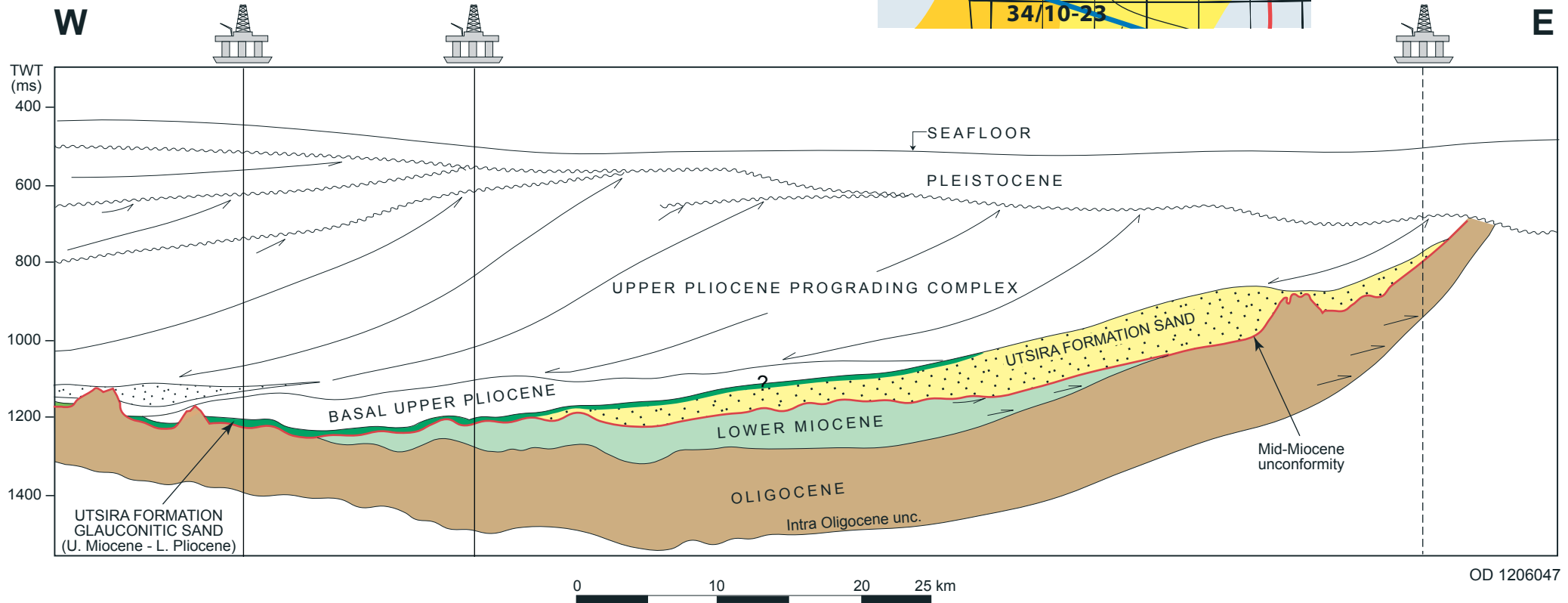
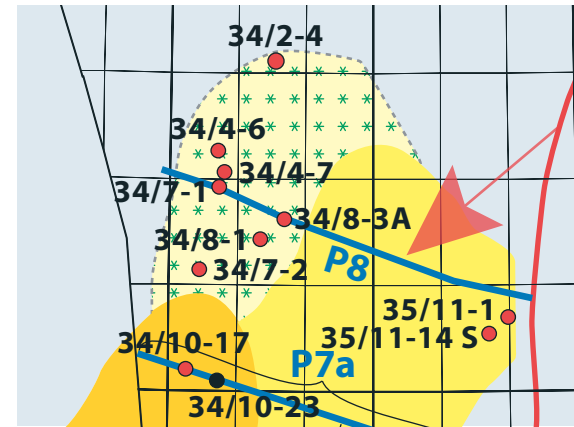
Northern Viking Graben - 61°N

Line NVGTI-92-105

34/7-1

34/8-3A

35/11-1



Profile 8: East-west transect of the northern North Sea at about 61°N illustrating the main sequences and sedimentary architecture of the post-Eocene strata. Note the Mid Miocene unconformity (red line) and the seismic truncation of the Lower Miocene (see also Map 1 for location, modified after Eidvin & Rundberg 2001 and Rundberg & Eidvin 2005).

References: Rundberg, Y. & Eidvin, T., 2005: Controls on depositional history and architecture of the Oligocene-Miocene succession, northern North Sea Basin. In B.T.G. Wandaas et al. (eds.): Onshore-Offshore Relationships on the North Atlantic Margin. NPF Special Publication 12, 207-239.

Eidvin, T. & Rundberg, Y., 2001: Late Cainozoic stratigraphy of the Tampen area (Snorre and Visund fields) in the northern North Sea, with emphasis on the chronology of early Neogene sands. Norsk Geologisk Tidsskrift, 81, 119-160. Available from the internet: http://www.npd.no/Global/Norsk/3%20-%20Publikasjoner/Forskningsartikler/Eidvin_and_Rundberg_2001.pdf