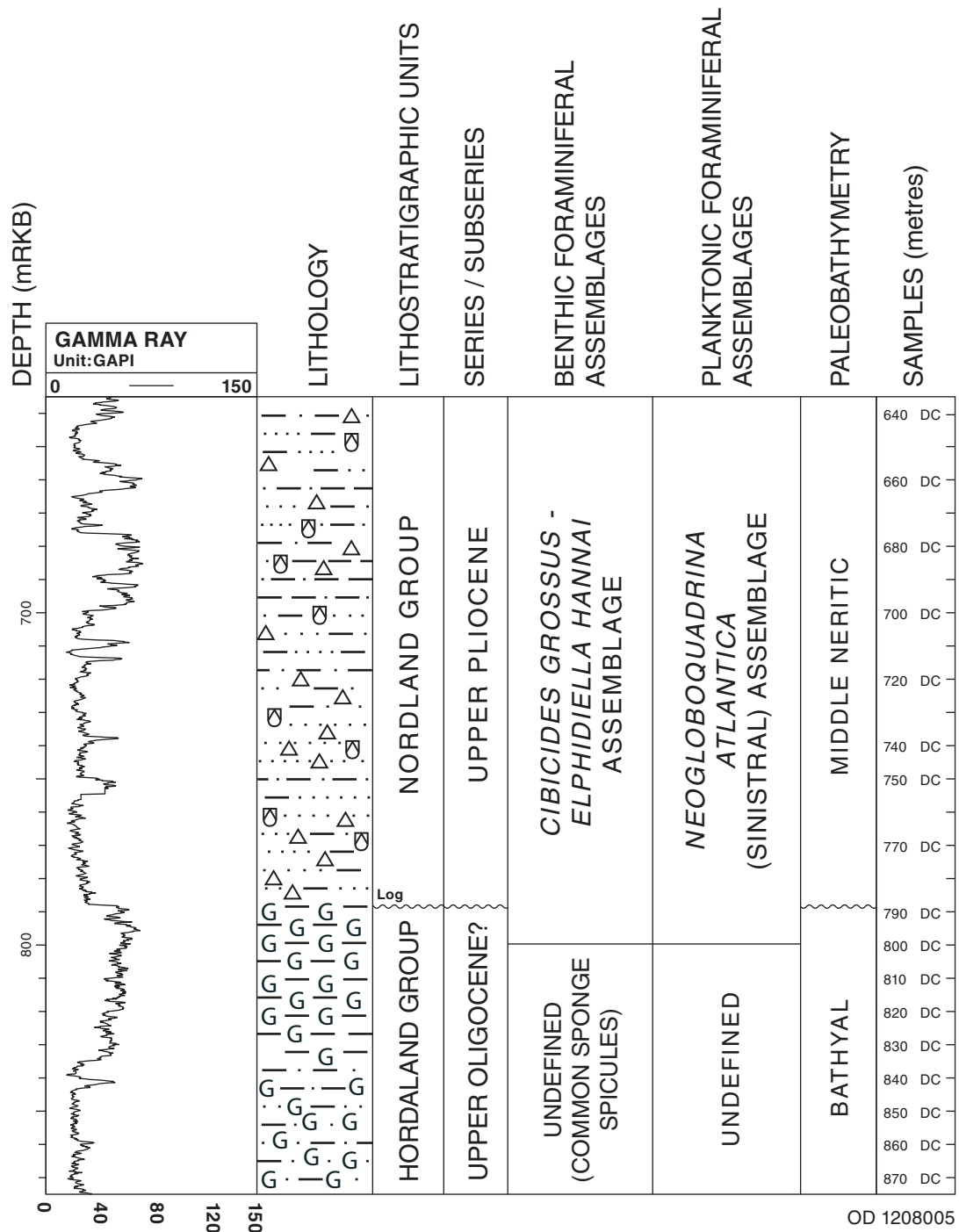


# WELL 29/3-1



Sea Floor = 156,2 metres below rig floor

DC = Ditch cuttings

gAPI = American Petroleum Institute gamma ray units

☒ = Abundant molluscs or mollusc fragments

G = Abundant glauconite

△ = Ice-rafted pebbles

**Fig. 1:** Well summary figure for the ?Upper Oligocene and Upper Pliocene in well 29/3-1 including gamma ray log, lithology, lithostratigraphic units, series/subseries, benthic foraminiferal assemblages, planktonic fossil assemblages, paleobathymetry and analysed samples.