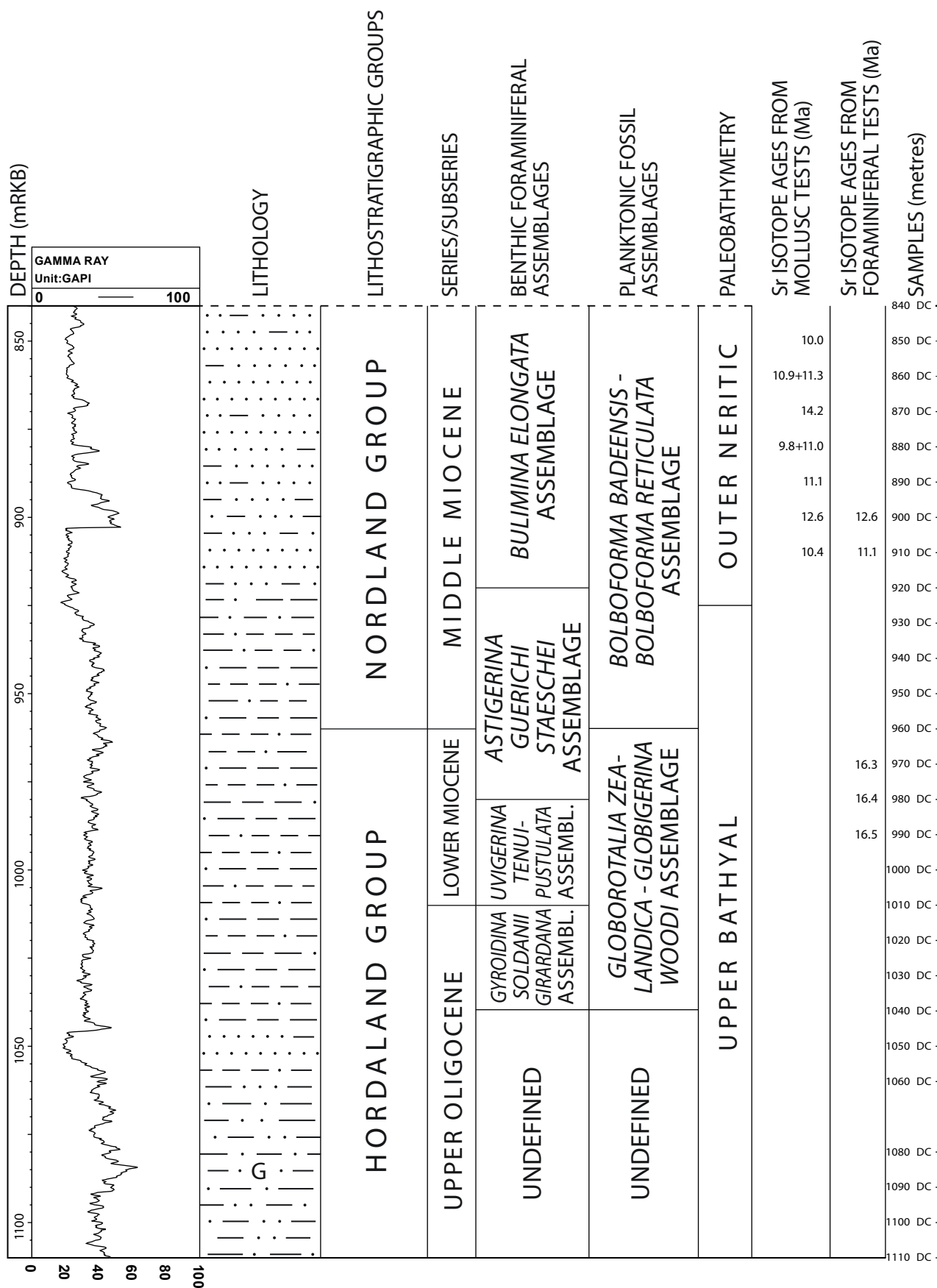


WELL 30/6-3



Sea floor = 130 metres below rig floor (mRKB)
 DC = Ditch cuttings
 GAPI = American Petroleum Institute gamma ray units
 G = Glauconite

OD 1209009

Fig. 1: Well summary figure including gamma ray log, lithology, lithostratigraphic units, series/subseries, benthic foraminiferal assemblages, planktonic fossil assemblages, paleobathymetry, strontium isotope ages and analysed samples for the lower part of the investigated sequence in well 30/6-3 (Upper Oligocene to Middle Miocene).