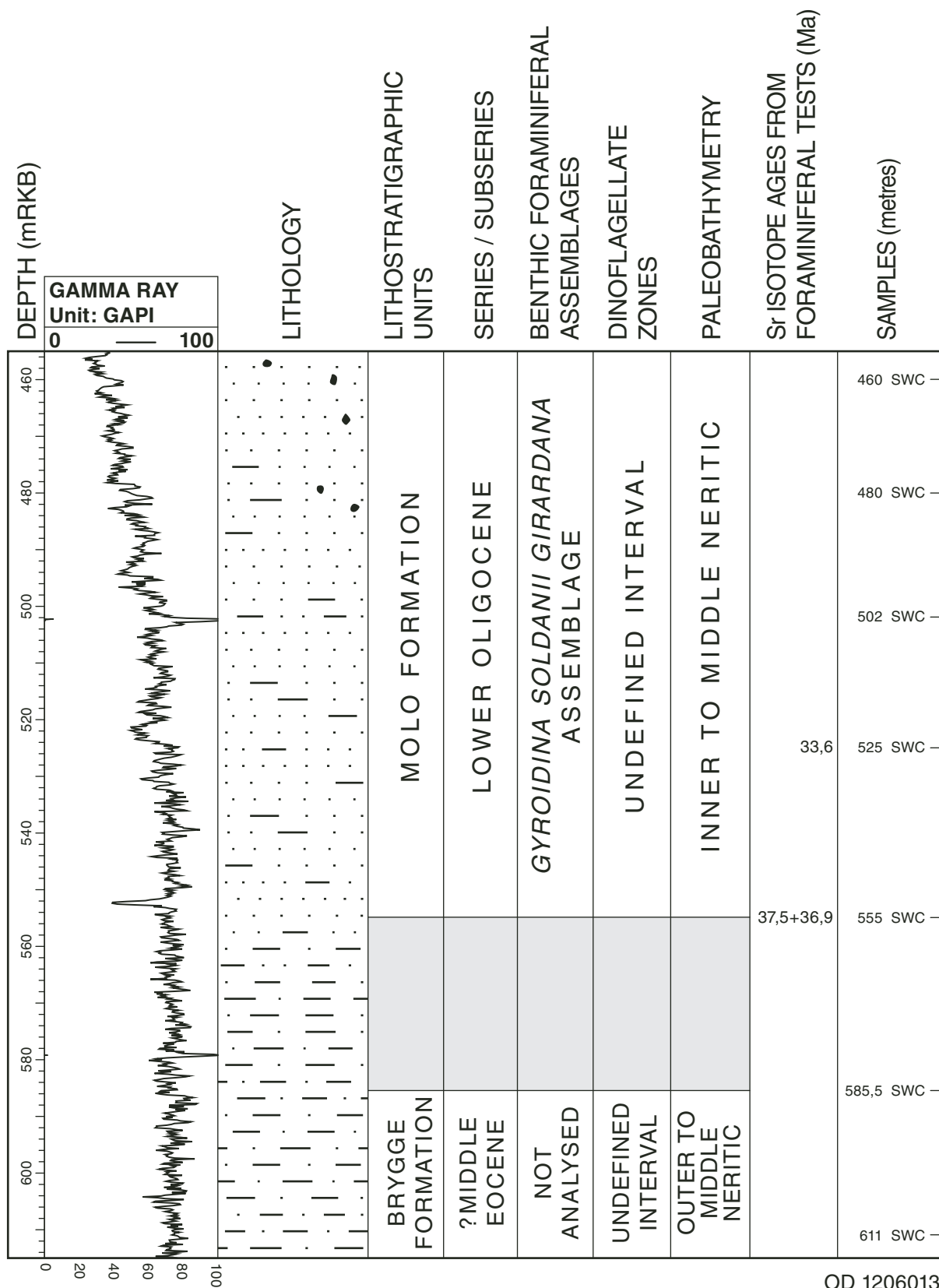


# WELL 6610/3-1



Sea floor = 332 metres below rig floor (mRKB)  
 gAPI = American Petroleum Institute gamma ray units  
 SWC = Side-wall core  
 ● = Rounded or sub-angular pebbles

**Fig. 1:** Well summary figure for the ?Middle Eocene to Lower Oligocene in well 6610/3-1 including gamma ray log, lithology, lithostratigraphic units, series/subseries, benthic foraminiferal assemblages, paleobathymetry, strontium isotope ages and analysed samples (modified after Eidvin et al. 1998a).