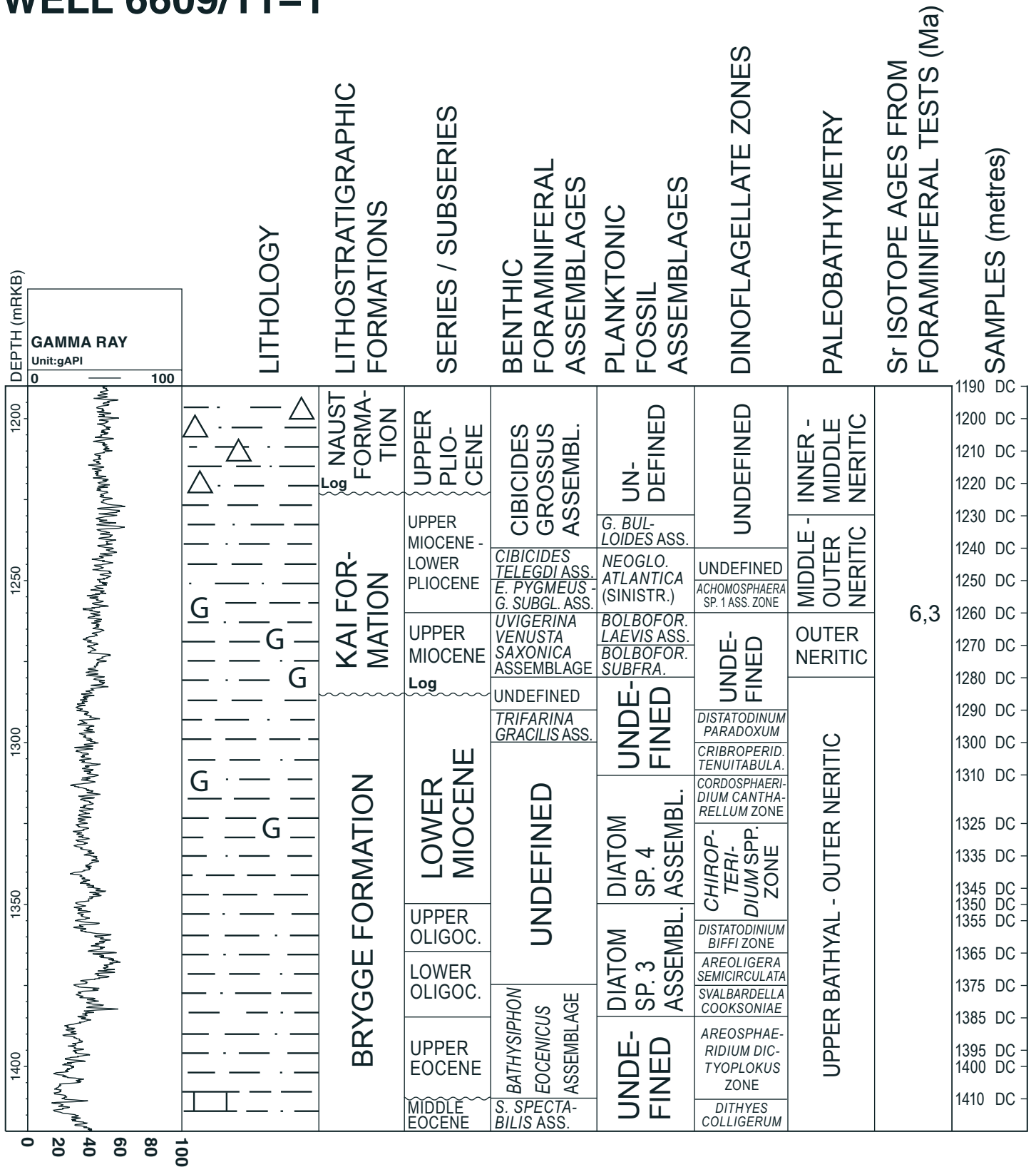


WELL 6609/11-1



Sea floor = 263 metres below rig floor (mRKB)
gAPI = American Petroleum Institute gamma ray units
DC = Ditch cuttings
△ = Ice-rafted pebbles
G = Abundant glauconite
□ = Limestone

OD 1208027

Fig. 1: Well summary figure for the Middle Eocene to Upper Pliocene in well 6609/11-1 including gamma ray log, lithology, lithostratigraphic formations, series/subseries, benthic foraminiferal assemblages, planktonic fossil assemblages, dinoflagellate zones, paleobathymetry, strontium isotope age and analysed samples.