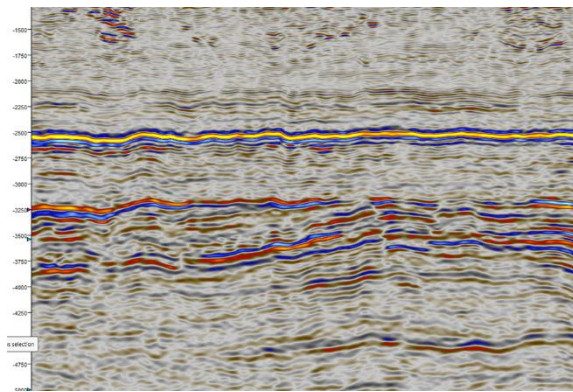


Multiazimuth processing and imaging

Recent large multi-client surveys on the NCS have given the opportunity for multi azimuth processing projects over a number of fields in a mature area. This presentation will show the workflow employed in the Krafla area to combine two surveys with differing azimuth and acquisition parameters. The workflow included full pre-processing from field tapes through to final PSDM deliverables and this will be shown in the presentation.

The final image shows that the combined result is better than the individual surveys on their own and this result has enhanced the interest in this area.

Single Azimuth



Dual Azimuth

